



LEADING INTERNATIONAL HOTEL FULL-PROCESS PROJECT MANAGEMENT CONSULTING COMPANY

国际领先的酒店全过程工程管理咨询公司

明辰(北京)国际工程咨询有限公司

地址:北京市朝阳区广渠门外大街8号8层东座908

电话:010-67770825 网址:www.minchintl.com

邮箱:info@minchintl.com

MINCH INTERNATIONAL ENGINEERING CONSULTING CO.,LTD.

Add: 908, Tower B, No. 8 Guangqumenwai Street, Chaoyang District, Beijing, China

Tel: 010-67770825 Web: www.minchintl.com

Email: info@minchintl.com

明辰(北京)国际工程咨询有限公司

MINCH INTERNATIONAL ENGINEERING CONSULTING CO., LTD.

MINCH明辰

CONTENTS

目录

01
关于我们 ————— 01
ABOUT US

02
我们的优势 ————— 03
OUR ADVANTAGES

03
公司业务 ————— 09
WHAT WE OFFER

04
我们的团队 ————— 13
OUR TEAM

05
组织架构 ————— 15
ORGANIZATION CHART

06
项目案例 ————— 16
PROJECT EXPERIENCES

07
公司客户 ————— 32
CLIENT OF COMPANY

ABOUT US

关于我们

Minch明辰是一家国际领先的全过程工程管理咨询公司,拥有管理咨询公司的严谨策略及分析技巧,同时也具备众多国际工程和高端项目的管理经验。公司业务涵盖高端酒店、综合体、商业、博物馆及文化旅游等各类项目,提供从项目策划、品牌管理、设计管理、施工管理、成本采购管理到项目运营管理等全过程的国际化工程管理咨询服务。

明辰携手产业链全球领导者,全力驱动行业生态进化,并通过专业的顾问服务为客户提升项目的价值、项目体验及投资收益。



Minch is a leading international full-process project management consulting company. It has the rigorous strategies and analysis skills, and also has many international high-end project management experience. The company's business covers various projects such as luxury hotels, complexes, shopping malls, museums, and cultural tourism projects. It provides international project management consulting from the project planning, IP creation, design management, construction management, cost & procurement management to project operation management full-process management services. Minch joins hands with global leaders in the industry to accelerate the industry's ecological evolution, and enhances the value of projects and investment returns for clients.

- 提供从项目策划、品牌管理、设计管理、施工管理、成本采购管理到项目运营管理等全过程的国际化工程管理咨询服务

provides international project management consulting from the project planning, IP creation, design management, construction management, cost & procurement management to project operation management full-process management services.

OUR ADVANTAGES

我们的优势

我们跨专业领域团队通过以下方式创造独特价值

- 拥有国际视野和国内外高端项目经验
- 拥有各专业和多样化的国际团队
- 与国际大牌设计公司的紧密合作
- Minch的服务参考国际标准
- 团队的高粘合度使得我们能够迅速反应
- 完善的国内外项目数据库(成本数据, 采购数据, 合同数据)

OUR CROSS-DISCIPLINARY TEAM CREATES UNIQUE VALUE BY

- Our international vision and experience in high-end projects
- Our professional and diverse international team
- Our close cooperation with big international companies
- Our International Standard Services
- The team's high adhesion allows us to react quickly
- Our sufficient domestic and overseas projects database (cost data, procurement data, contract data)

业主开发团队的背景使明辰超越普通的项目管理公司

- 在管理领域更具统筹性和前瞻性
- 全方位的思考使项目管理更具效率
- 多专业的专家携手贡献卓越的价值
- 从业主角度出发, 实现全方位的代业主管理

DEVELOPER'S BACKGROUND ENABLES MINCH TO SURPASS ORDINARY PM COMPANIES

- More integrated and forward-looking in management
- Comprehensive thinking makes project management more efficient
- Multi-disciplinary experts work together to contribute outstanding value
- Achieve a full-process project management on behalf of the owner

国际化的管理系统

International Management System

明辰国际采用国际一流的管理系统,对国内的管理系统进行了全面的升级。融合了项目管理和无线移动系统,提供快速有效的解决方案,包括项目服务平台、预防性维护计划、采购管理、成本管理、合同管理、进度管理等等,令中央多档案管理能够在更广泛的地理范围内得以实现。

Minch has adopted an international first-class management system and comprehensively upgraded its domestic management system. Integrates project management and wireless mobile systems to provide fast and effective solutions, including project service platforms, preventive maintenance plans, procurement management, cost management, contract management, schedule management, etc.



完善的人员培训体系

Perfect staff training system

全方位培训计划

Comprehensive training plan



责任意识提升

Increased awareness of responsibility



业务能力提升

Business Capability Enhancement



职业素养提升

Professional improvement



团队管理提升

Team management improvement



01
总部课程
Headquarters Course



02
专属特色培训学校
Exclusive characteristic training school



03
专案课程
Project Course



04
60多位专业讲师
More than 60 professional lecturers



05
专业培训课
Professional training courses



06
项目观摩机制
Project observation mechanism



WHAT WE OFFER

公司业务

项目策划

- 项目可研
- 区域及市场分析
- 项目功能指标及设施规划
- 投资估算
- 投资回报分析

Project Planning

- Project Feasibility Study
- Regional & Market Analysis
- Project functional indicators and facility planning
- Investment estimate
- ROI analysis

项目品牌建议

- 创建品牌、IP并设立宣传模式
- 国际酒店品牌建议
- 相关设计或顾问公司选择名单
- 管理品牌和后期运营的建议

Project Brand Suggestion

- Create a brand, IP, and establish a marketing model
- International hotel brand recommendations
- List of related design or consultant companies
- Advice on managing brands and operations

项目设计管理

- 与国外设计师的设计协调
- 材料的本地化方案
- 针对美学和体验进行整体策划
- 文旅项目的概念设计和规划设计

Project Design Management

- Design coordination with foreign designers
- Materials localization scheme:
- Comprehensive planning for aesthetics and experience
- Conceptual design and planning design of cultural tourism projects

项目运营管理

- 项目策划及规划设计阶段的运营管理建议
- 运营管理服务预算
- 招标文件准备
- 运营管理公司考核标准
- 主题乐园、酒店运营管理公司名单推荐

Project Operation Management

- Operation management recommendations in the project planning and design stage
- Budget for Operations Management Services
- Preparation of bidding documents
- Operation management company assessment standards
- Recommended theme park and hotel operation management company list

OPEN 开业筹备阶段管理

- 开业物品FFE和OSE清单
- 运营物品采购实施办法及信息管理方案
- 招标技术文件 (提供技术要求、品牌及合同模版)
- OSE及FFE采购进度计划、现金流预测及物流管理方案
- 采购物品质量控制标准和验收流程

国际贸易

- 国际大宗商品交易服务
- 国外家具和艺术品采购
- 建筑材料国际贸易
- 设备租赁
- 其他国际贸易相关服务

Management during the pre-opening phase

- Prepare BOQ for FFE and OSE
- Procurement methodology and data management
- Technical Documents (Specification, Brands and Contract Templates)
- OSE and FFE procurement schedules, cash flow forecasting and logistics management solutions
- Quality control standards and handover process for purchase items

international trade

- International Commodity Trading Services
- International Furniture and Art Trading Services
- International trade of building materials
- Equipment Leasing
- Other International Trade Related Services

项目施工管理

- 建造过程的品质控制
- 建造过程的进度控制
- 建造过程的成本控制

成本合约采购管理

- 可行性研究
- 造价咨询
- 国际采购
- 工程审计

Project Construction Management

- Quality control
- Progress control
- Cost control

Cost contract procurement management

- Feasibility study
- Cost Consulting
- International Procurement
- Project Auditing

OUR TEAM

我们的团队

Minch的主要成员皆来自世界著名的地产开发公司和工程管理公司, 经历过全国和世界知名的高端项目。团队成员有着国际化的教育背景, 且拥有平均超过20年的项目管理经验。

Minch's main members are from world-renowned real estate development companies and project management companies. We have experienced numerous world-renowned high-end projects. The team members have an international education background and have average more than 20 years of project management experience.



品牌战略团队 Brand & Strategy Team

项目策划、项目可研、品牌创建、品牌营销
Project planning, Feasibility Study, Brand Creation, Brand Marketing



设计管理团队 Design Management Team

美学体验、室内设计、园林设计、规划设计、主题乐园设计、文旅项目创意
Aesthetic & Experience, Interior Design, Landscaping Design, Planning & Layout Design, Theme Park Creation Design, Cultural and Tourism Project Creativity



项目管理团队 Project Management Team

项目总监、工程经理、内装工程师、结构工程师、机电总监、弱电工程师、强电工程师、水暖工程师、软装工程师、美学与体验、进度控制、设计协调

Project Director, Project Manager, Interior Engineer, Structural Engineer, Mechanical and Electrical Director, MEP Engineer, Soft Decoration Engineer, Aesthetics and Experience, Progress Control, Design Coordination



商务团队 Commercial Team

国际合约团队, 国际成本和审计团队, 国际采购团队, 酒店成本管理团队、主题乐园成本管理团队
International Contract Team, International Cost and Audit Team, International Procurement Team, Hotel Cost Management Team, Theme Park Cost Management Team



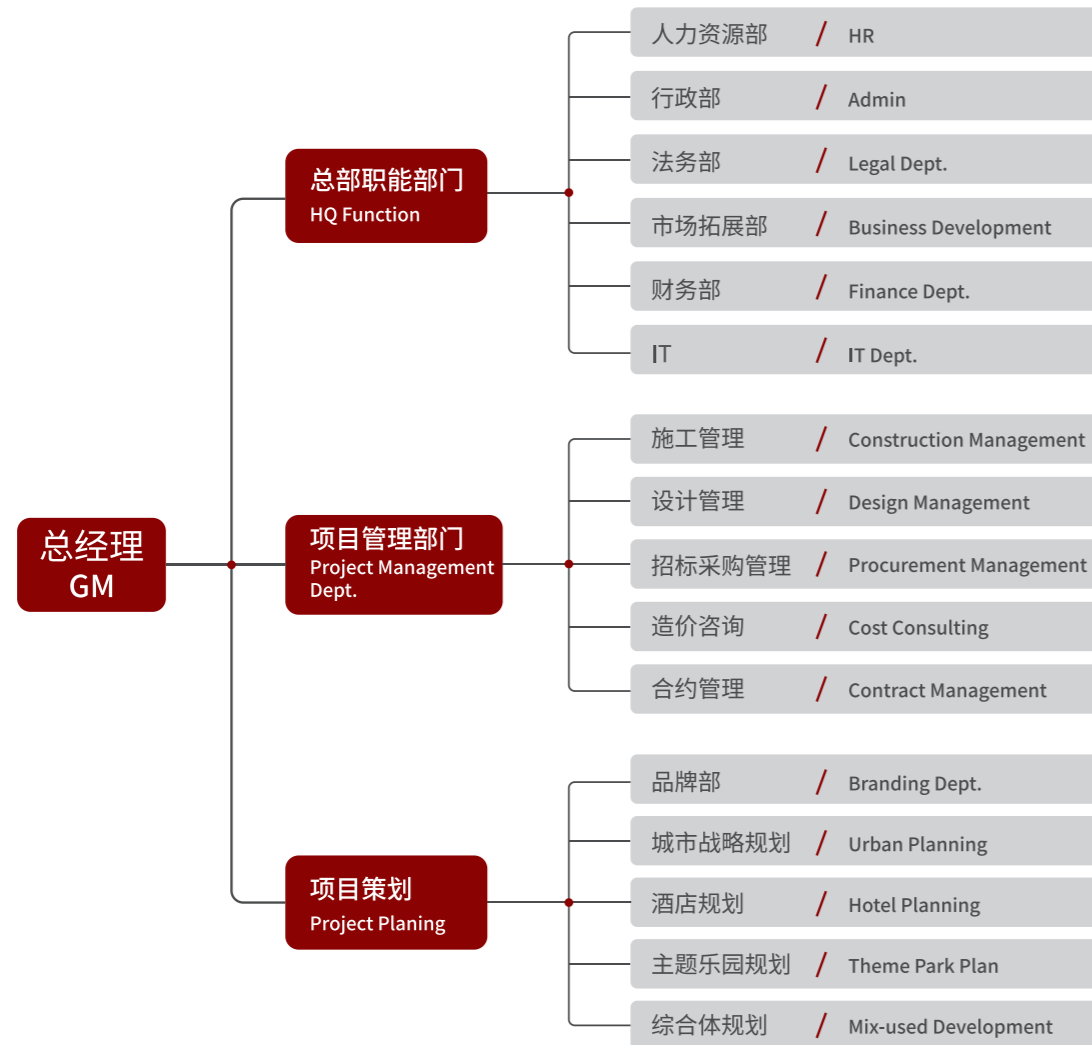
运营管理团队 Operation Management Team

社区创建、会所运营管理、酒店运营管理、主题乐园运营管理

Community Creation & Operation Team, Club Operation Management, Hotel Operation Management, Theme Park Operation Management

ORGANIZATION CHART

组织架构



PROJECT EXPERIENCES

项目案例

北京宝格丽酒店 Bvlgari Hotel Beijing

北京宝格丽酒店是宝格丽集团中国首家，世界第四家宝格丽奢侈品酒店。酒店的设计上，选择了意大利最负盛名之一的建筑事务所Antonio Citterio Patricia Viel来共同打造。酒店拥有119间典雅的客房和套房，包含一间宝格丽总统套房，所有房间均由意大利奢华家居品牌如Maxalto 和 B&B Italia打造而成。

我们借鉴了上世纪30年代的经典意大利工匠精神，严格把控北京宝格丽酒店内部每一处风格和细节的统一性、舒适度与精准度，体现奢侈品的工匠精神和设计韵味。酒店的成本管理是2018年度最佳管理案例，酒店销售创造了万豪奇迹。

The Bulgari Hotel Beijing is the first Bulgari Hotel in China and the fourth in the world. Antonio Citterio Patricia Viel, one of Italy's most prestigious architectural firms, was selected as designer for this hotel. The hotel has 119 elegant rooms and suites, including a Bulgari Presidential Suite, all of which were furnished by Italian luxury home brands such as Maxalto and B & B Italia.

We borrowed from the classic Italian artisan spirit of the 1930s and strictly controlled the unity, comfort and accuracy of every style and detail inside the Bulgari Hotel Beijing, reflecting the artisan spirit and design charm of luxury goods. Hotel cost management is the best practice case of 2018 in the field, and hotel sales have created a miracle in the Marriott group.



上海前滩香格里拉酒店 Shanghai Qiantan Shangri-La Hotel

业主是陆家嘴集团，前滩香格里拉大酒店预计于2021年开业，是香格里拉酒店集团位于浦东世博前滩地区唯一的豪华五星级酒店，与前滩太古里、前滩中心大厦相连，组成最高端的城市综合体，共同打造集办公、商业、酒店等多功能为一体的大型国际化商务区。前滩香格里拉大酒店的主楼26层，酒店裙房5层，拥有604间客房。目前在上海已有陆家嘴香格里拉和静安香格里拉两家酒店，落户前滩后将是上海的第三家，也是香格里拉集团的亚洲旗舰店，势必会成为前滩地标性酒店。

The owner is the Lujiazui Group. The Shangri-La Hotel, Qiantan is expected to open in 2021. It is the only luxury five-star hotel in the Qiantan area of the World Expo in Pudong. The complex will jointly create a large international business district integrating office, commerce, hotel and other functions. The main building of Shangri-La Hotel, Qiantan is on the 26th floor and the podium is on the 5th floor, with 604 rooms. There are currently two hotels in Shanghai: Shangri-La, Lujiazui and Shangri-La, Jingan. After their settlement in Qiantan, they will be the third in Shanghai and the flagship store of Shangri-La Group in Asia, which will surely become a landmark hotel in Qiantan.

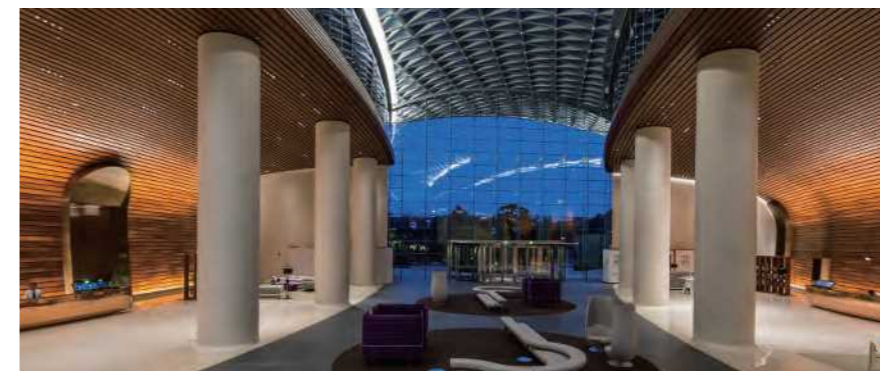


启皓北京五星级办公楼- 打造未来的工作场所

Genesis Beijing Five-Star Office Building-Creating the Workplace of the Future

相比传统的办公室，启皓办公楼更加开放、连接、充满活力与动感，提供交流的公共空间，并以各种活动模式促进租户间的交流合作，生发新的灵感，并提供创新的合作机会。我们提供了诸多的公共空间，如中庭，食社，艺社，河岸剧场，咖啡厅，茶室和书店等，并配备了全覆盖的WI-FI及瑞士公司提供的柔和的背景音乐。启皓办公楼还设计了蒸汽加湿系统和高效空气净化系统。LEED黄金标准为设计规范，整个社区的许多建筑指数都采用自动控制系统进行管理。

办公楼是行业2017年度最佳成本管理案例。目前办公楼的租金创造了北京非传统区域办公楼租金和运营收入的奇迹。



Compared with traditional offices, Genesis Beijing office building is more open, connected, vibrant and dynamic, provides public space for communication, and promotes communication and cooperation among tenants through various activity modes, generates new inspiration, and provides innovative cooperation opportunities. We provide many public spaces, such as atriums, restaurants, art clubs, riverside theaters, cafes, tea rooms and bookstores, etc., and are equipped with full coverage of WI-FI and soft background music provided by Swiss companies. Genesis Beijing also designed steam humidification system and efficient air purification system. The LEED Gold Standard is a design specification, and many building indexes throughout the community are managed using automated control systems.

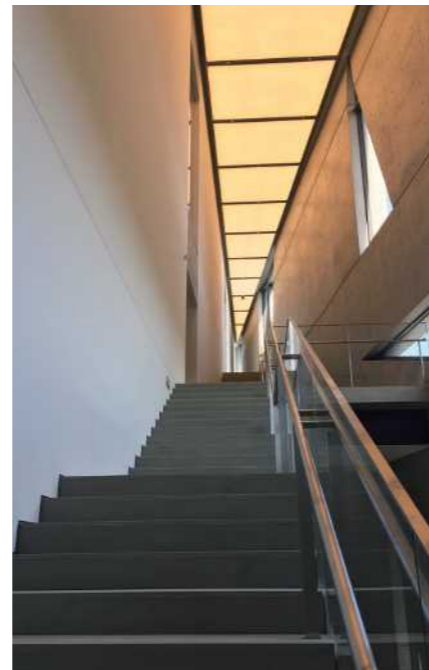
The office building is the industry's best case for cost management in 2017. The current rent of office buildings has created a miracle of office rental in non-traditional areas of Beijing.



安藤忠雄美术馆 Tadao Ando Museum of Art

我们全新的美术馆是由日本著名的设计大师安藤忠雄亲手设计的清水结构美术馆，美术馆体现了多种设计灵感，并营造一个美和艺术的公共空间。在建造过程中，施工和项目管理团队克服了种种的困难，如双曲面的玻璃幕墙和双曲面清水混凝土的施工，并在施工过程中处处体现了工匠精神，打造出完美的艺术作品。

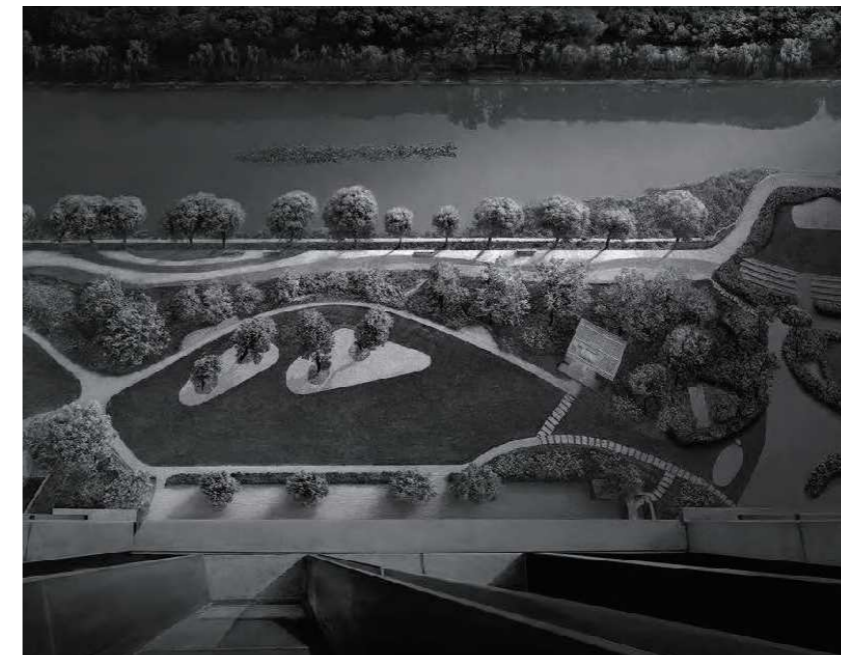
Our brand-new art museum is the Kiyomizu Structural Art Museum designed by Tadao Ando, a well-known Japanese design master. The art museum embodies a variety of design inspirations and creates a public space of beauty and art. During the construction process, the construction and project management team overcome various difficulties, such as the construction of double-curved glass curtain walls and double-curved fair-faced concrete. During the construction process, the spirit of craftsmanship was reflected everywhere to create perfect works of art.



启皓花园 Genesis Garden

启皓花园由国际景观建筑事务所Enea设计的社区花园，是综合体精神理念的核心所在。通过独特的表现形式，搭配不同的色彩和造型，运用泰山松探索“阴阳”协调之道，并以花园中心的河道营造几何造型。社区中还设置了一个户外河岸剧场，用于举办各类音乐、戏剧和电影文化活动，为人们的思想和灵魂提供精神食粮。

Genesis Garden is a community garden designed by the international landscape architecture firm ENEA. Through unique expressions, with different colors and shapes, Taishan pine is used to explore the "yin and yang" coordination, and the river in the center of the garden is used to create geometric shapes. There is also an outdoor riverside theater in the community, which is used to hold various music, theater and film cultural activities, and to provide spiritual food for people's minds and souls.



天津朝亚数据中心一期、二期项目 Chayora TJ Phase 1 & Phase 2 Projects

业主是一家总部位于香港的世界级基础设施开发商朝亚Chayora。项目位于天津市北辰工业区，计划在总面积为480亩的七个子地块上分期建设多个数据中心项目。规划建设六个数据中心，每个可支持3,000机柜，以及三个高性能计算数据中心，每个可支持1,000机柜。运营商中立数据中心，具备中国三大运营商和多家国际运营商网络联通。目前一期已于2020年11月建成投产，容纳4KW IT Load 及1600m2的管理办公区域。二期预计2021年10月建成投产，容纳12KW IT Load。建成的朝亚TJ1数据中心是中国首个获得OCP Ready™ 认证的数据中心设施，也是华北地区首个拥有Uptime T3设计认证和建造认证的数据中心。

The owner- Chayora is a world-class infrastructure developer headquartered in Hong Kong. The project is located in Beichen Industrial Zone, Tianjin. It plans to build multiple data center projects in phases on seven sub plots with a total area of 480 mu. It is planned to build six data centers, each supporting 3000 cabinets, and three high-performance computing data centers, each supporting 1000 cabinets. Operator neutral data center, with China's three major operators and a number of international operators network connectivity. At present, phase I has been completed and put into operation in November 2020 to accommodate 4kw IT load and a 1600m2 management office area. Phase II is expected to be put into operation in October 2021 to accommodate 12KW IT load. The built Chaoyra TJ1 data center is the first data center facility in China to obtain OCP Ready™ Certification, and also the first data center in North China to have Uptime T3 design certification and construction certification.



朝亚-江苏太仓数据中心项目 Chayora – Taicang Data Center Project

项目位于江苏省太仓市璜泾镇新海村，占地面积36,666m2，建筑面积为82,412m2，由3个独立的数据中心组成，总IT Load 约为64.5MW。项目由美国著名的数据中心设计公司Corgan负责，建成投产后将成为长三角超大规模、按世界一流标准设计和运营的、具备充分可扩展性的数据中心和数据中心园区。

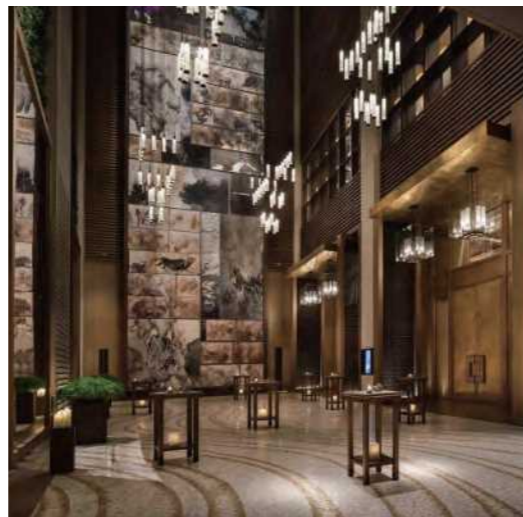
The project is located in Xinhai village, Huangjing Town, Taicang City, Jiangsu Province, covering a land area of 36,666m2 and a build up area of 82,412m2, which is composed of three independent data centers, with a total IT load of about 64.5MW. The project is Designed by Corgan - a famous data center design company in the United States. After its completion and operation, it will become a data center and data center park with full scalability designed and operated according to world-class standards.



北京瑰丽酒店 Beijing Rosewood Hotel

项目坐落在北京京广中心，由香港新世界集团及信兴集团联合开发，项目 B1-23 层是酒店，24 层以上是办公楼及公寓，B1 层为厨房、机电用房、员工餐厅、1F 是酒店大堂、咖啡厅，5-7 为多功能厅、3-4 中西餐厅，8-23 层为客房，23F 为总统套。总建筑面积为 54000 平方米，总造价 8.2 亿。

The project is located in Beijing Jinguang Center and jointly developed by Hong Kong New World Group and Xinxing Group. The B1-23 floors of the project are hotels, the 24 floors above are office buildings and apartments, the B1 floors are kitchens, electromechanical rooms, staff restaurants, 1F is the hotel lobby and coffee shop, 5-7 is the multi-function hall, 3-4 Chinese and Western restaurants, 8-23 floors are guest rooms, and 23F is the presidential suite. The total construction area is 54000 square meters, and the total cost is 820 million.



北京新发地12万吨冷库及配套项目 Beijing Xinfadi 120,000 Ton Cold Storage and Food Mart Project

项目位于北京市丰台区花乡新发地村，总用地规模为28万平方米，GFA为20万平方米，包含新建冷库3座、展示交易中心1座、蔬菜仓储楼8座、改造蔬菜库2座及制冷等相关配套工程、停车场建设等。项目将于2021年7月开工建设，目前设计采用全世界最先进的冷链技术，同时考虑到电商、现代物流及金融服务，建成后将成为全国最大的冷库及配套项目。

The project is located in Xinfadi village, Huaxiang, Fengtai District, Beijing, with a total land scale of 283,494 square meters and GFA of 208,125 square meters, including three new cold storages, one exhibition and trading center, eight vegetable storage buildings, two transformed vegetable warehouses, cold storage and other related supporting projects, and parking lot construction. The project will start construction in July 2021. At present, the design adopts the most advanced cold chain technology in the world, taking into account of the e-commerce, modern logistics and financial services. After completion, it will become the largest cold storage and food mart project in China.



深圳乐高乐园及酒店项目 Shenzhen Legoland and Hotel Project

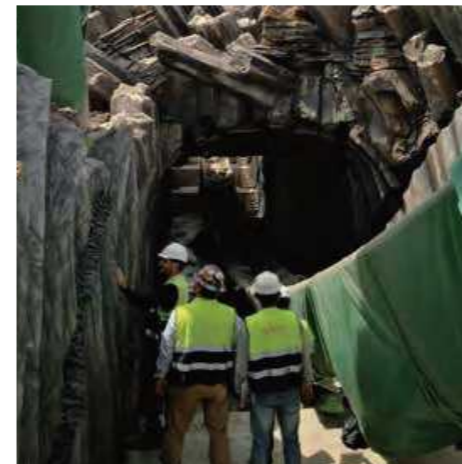
位于深圳大鹏湾的乐高乐园及酒店项目，由深圳合正地产公司及英国Merlin公司共同开发，项目由三个酒店，即乐高乐园主题酒店 (35,200m²)，水上乐园城堡酒店 (20,869m²)，水上乐园宝藏岛酒店 (23,360m²)、一个乐高乐园、一个水上乐园、主题商业街、配套员工公寓及停车场组成。项目由总部位于加拿大多伦多的著名娱乐设计公司FORREC设计，预计2024年竣工投入使用。

The LEGO Park and hotel project in Mirs Bay, Shenzhen, is jointly developed by Shenzhen Hezheng real estate company and Merlin. The project consists of three hotels: Legoland Theme Park Hotel (35,200m²), Water Park Castle Hotel (20,869m²), Water Park Treasure Island Hotel (23,360m²), one Legoland Park, one water park and commercial street, Supporting staff apartment and parking lot. The project is designed by FORREC - a famous entertainment design company headquartered in Toronto, Canada, and is expected to be completed and put into use in 2024.



北京环球影城项目 Beijing Universal Studio Theme Park Project

北京环球影城由北京首寰文化旅游投资有限公司投资建设，项目从2012年设计到2021年开业历经9年时间，建成后是世界第五个、亚洲第三个环球影城主题公园，也是迄今为止规模最大的环球影城项目。项目位于北京市通州区梨园镇，一期总建筑面积为80万平米，其中主题乐园部分26.4万平米，酒店商业等54万平米。游客可畅游主题公园内7大主题景区，包括37个骑乘设施及地标景点，欣赏度假区内24个精彩的娱乐演出，实现独特的沉浸式体验。



Beijing Universal Studio is developed by Beijing Shouhuan Cultural Tourism Investment Co., Ltd. The project took nine years from its design in 2012 till its opening in 2021. It's the fifth Universal Studios Theme Park in the world, the third in Asia, and the largest Universal Studios project in the world to date. The project is located in Tongzhou district of Beijing Liyuan town. The total GFA of the first phase is 800,000m², including 264,000m² for the theme park and 540,000m² for hotels and retails. Visitors can enjoy 7 theme attractions, including 37 riding facilities and landmark attractions, and enjoy 24 entertainment performances in the resort for a unique and immersive experience.



上海张江希尔顿酒店 Shanghai Zhangjiang Hilton Hotel

上海张江核心区又称中国的硅谷，张江科技之门综合体由两座超高层建筑320米的双子塔及张江希尔顿酒店及商业构成，是张江的标志性建筑，位于此地块的希尔顿酒店也是高品质、高科技酒店的代表。酒店项目位于张江中区单元56-01地块内，地下3层，地上23层；建筑面积约62428平米；建筑高度100米，含有2层地下车库，后勤区，酒店大堂，中餐厅，全日餐厅，宴会厅，新娘房，会议室，480间客房。由新加坡HBA设计，明辰国际负责项目管理。

Shanghai Zhangjiang core area is also known as China's Silicon Valley. Zhangjiang Science and Technology Gate Complex consists of two super high-rise buildings 320 meters of Twin Towers and Zhangjiang Hilton Hotel and commercial composition, is the landmark building of Zhangjiang. Located in this plot of Hilton Hotel is also a representative of high-quality, high-tech hotels. The hotel project with 3 floors underground and 23 floors above ground; The construction area is about 62,428 square meters; The height of the building is 100 meters, including 2 floors underground garage, logistics area, hotel lobby, Chinese restaurant, all-day dining restaurant, banquet hall, bridal room, meeting room, 480 rooms. Designed by Singa.



新疆禾木英迪格酒店 Xinjiang Hemu Holiday Inn Hotel

新疆禾木英迪格酒店位于新疆阿勒泰地区布尔津吉克普林国际滑雪度假区，背靠阿西麦里峰，南临吉克普林草原。以演绎原始山地村落的形式布局，竖向标高多层次，空间尺度多样化，诠释出“云间部落，牧歌禾木”的文化内涵。建筑面积 2.1 万平米，135 间客房，包含：客房、餐饮、会议设施、室内娱乐、行政管理、后勤区、设备间、停车位等配套设施，是集滑雪运动、温泉 SPA、度假、商务于一体的旅居度假新地标。

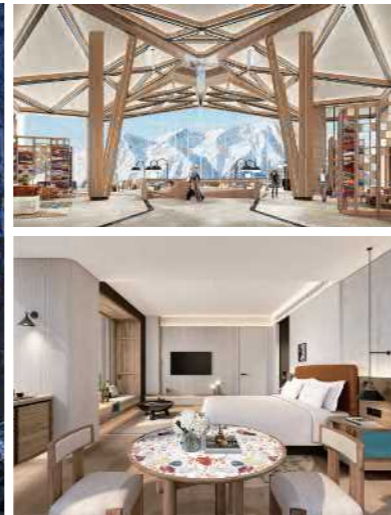
Hotel Indigo Xinjiang Hemu is located in Burzinjiplin, Altay Region. With a GFA of 21,000m² and 135 keys, including: guest rooms, catering, conference facilities, indoor entertainment, administration & logistics area, equipment room, parking space and other supporting facilities, it is a new landmark of travel and vacation integrating skiing, hot spring SPA, business and vacation.



新疆禾木假日酒店 Holiday Inn Xinjiang Hemu

新疆禾木假日酒店建筑面积 16,024 平米，193 间客房，包含：客房、餐饮、会议设施、室内娱乐、行政管理、后勤区、设备间、停车位等配套设施，是集滑雪运动、温泉 SPA、度假、商务于一体的旅居度假新地标。

Holiday Inn Xinjiang Hemu is located in Burzinjiplin, Altay Region. With a GFA of 16,024m² and 193 keys, including: guest rooms, catering, conference facilities, indoor entertainment, administration & logistics area, equipment room, parking space and other supporting facilities, it is a new landmark of travel and vacation integrating skiing, hot spring SPA, business and vacation.



上海前滩华尔道夫酒店 Shanghai Qiantan Waldorf Hotel

本项目位于上海市前滩 13-01 地块，是上海第二个华尔道夫酒店，也是全国为一个一城双星高端酒店。项目地上建筑面积 3.75 万平米，地下 3 层，地上 13 层，建筑高度，66 米，呈帆船造型，建筑由 KPF 设计，室内设计公司为 CCD。酒店一层西北侧为酒店大堂，西南侧为展厅；二层西南侧为宴会厅，西北侧为会议区；三层西南侧为宴会厅挑空空间，西北侧包含一个室内泳池和健身区域；四层至十三层为酒店客房层，共有客房 204 间。

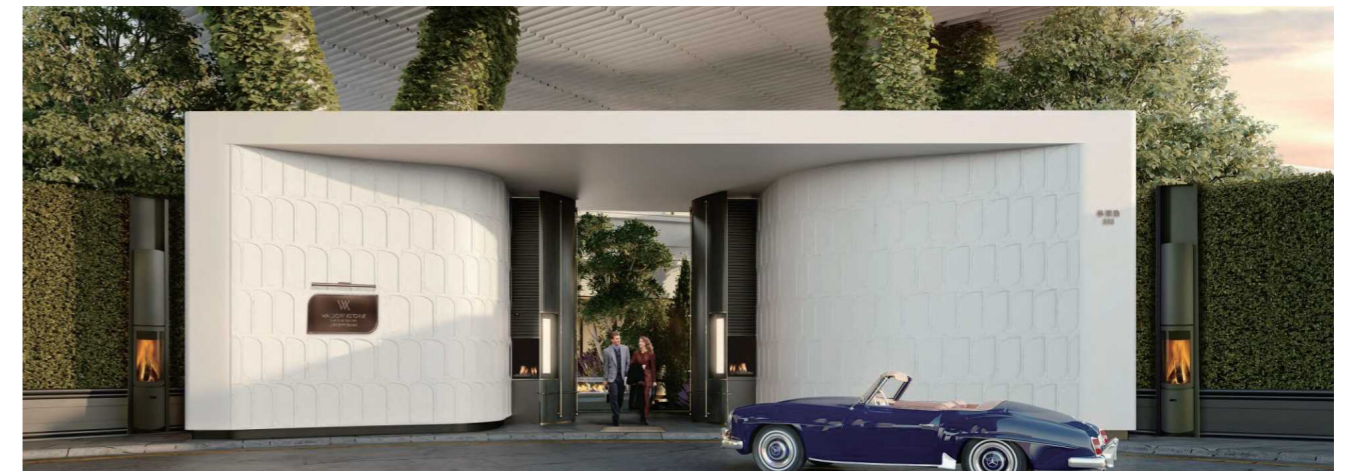
服务时间：2022-2024

明辰服务内容：酒店工程项目管理

The project is located in the plot 13-01 of Qiantan Shanghai. It is the second Waldorf hotel in Shanghai. The project has a construction area of 37500 square meters above the ground, 3 floors underground, 13 floors above the ground, and a building height of 66 meters. The building is designed by KPF, and the interior design company is CCD. The hotel has 204 keys, with indoor swimming pool, gym, spa area, conference hall, restaurants, etc.

Service time: 2022-2024

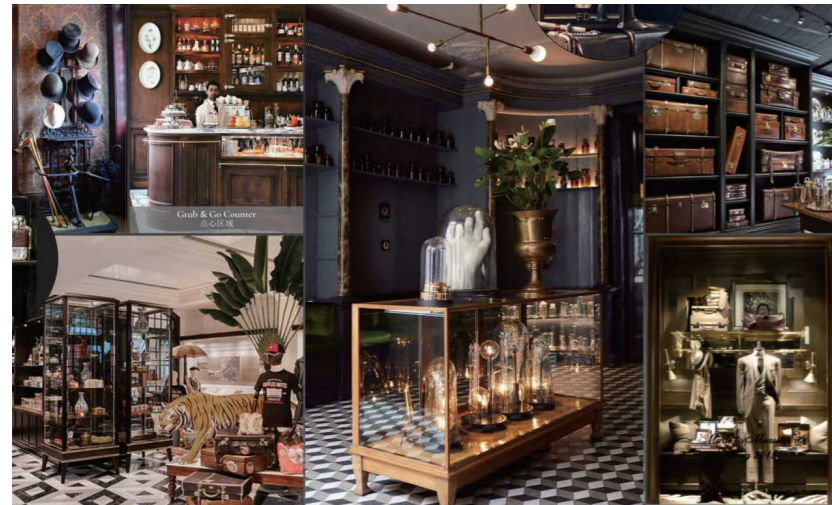
Minch Scope of Work: Project Management for the Hotel



大连费尔蒙酒店 Dairen Fairmont Hotel

大连费尔蒙酒店是始建于 1909 年的百年历史建筑改造为高端酒店的典型案例。大和旅馆外观为巴洛克风格的国家重点文物，于 2023 年开始进行改造，改造面积 13000 平方米，包括建筑修缮、内部提升改造、历史文化展示、智慧旅游信息化等保护利用改造、机电系统、泳池 SPA、宴会厅，米其林餐厅，大堂吧，顶层露台酒吧，停车场等配套服务设施建设及周边环境整治。服务范围：全过程项目管理、全过程成本及采购服务。

Dairen Fairmont Hotel is a typical case of a century old historic building that was built in 1909 and transformed into a high-end hotel. The exterior of the Yamato Hotel is a Baroque style national key cultural relic, which will be renovated starting from 2023. The renovation covers an area of 13,000m2, including building external and internal renovation, historical and cultural display, intelligent tourism informatization, MEP system upgrading, Swimming pool, SPA, banquet hall, Michelin restaurant, lobby bar, top terrace bar, parking lot and other supporting service facilities construction, as well as surrounding environmental improvement. Our service scope: full-process project management services, full procurement and cost management services.



福州香格里拉二期项目 Fuzhou Shangri-la Mix-used development

福州新权南路综合体发展项目包含香格里拉商业及五星级香格里拉酒店，建筑总面积：139009.58 平方米，其中地下室面积：69914.74 平方米，地上 20 层，高 92.6 米，至屋面女儿墙构架顶高度为 99.8 米，裙房 4 层，高度为 23.9 米；地下 B3 层、为商业、餐饮、设备用房和办公大堂；三层为商业营业厅、餐饮、设备用房、电影院；四层为商业营业餐饮、设备用房、集中商业；五层为商业营业厅、餐饮、设备用房；六层为物业管理、设备用房、办公用房；七至二十层为办公用房。服务范围：全过程项目管理及招标采购。

The development project of Fuzhou Xinquan South Road Complex includes Shangri La Commercial and five-star Shangri La Hotel, with a total construction area of 139,009.58m2, including a basement area of 69,914.72m2, 20 floors above ground, and a height of 92.6meters. The height from the top of the roof parapet structure is 99.8 meters, and the podium is 4 floors, with a height of 23.9 meters. The underground B3 floor is for commercial, catering, equipment rooms, and office lobbies, till the sixth floor are shopping, restaurants, cinema, property management, equipment rooms, and office rooms; The seventh to twenty floors are office buildings. Our service scope: Full process project management and procurement.



越南Hang Bai丽思卡尔顿酒店及公寓 Vietnam Masterise Hang Bai Ritz-Carlton Hotel and Luxury Apartments

越南 Hang Bai 丽思卡尔顿酒店及公寓由 1 个顶级国际六星级酒店丽思卡尔顿及 104 套豪华丽思卡尔顿公寓构成。投资方为 Masterise Homes。项目位于河内还剑县 22-44 排，距离剑湖 100 米。建设方为德尔塔承建公司，设计方为 GSA，建设高度为 8 层。我们的服务范围：项目国际采购服务。

The Hang Bai Ritz-Carlton Hotel and Apartments in Vietnam consist of one top-notch international six star hotel, Ritz-Carlton, and 104 luxurious Ritz-Carlton apartments. The investor is Masterise Homes. The project is located in Rows 22-44, Huanjian County, Hanoi, 100 meters away from Jianhu Lake. The construction party is Delta Construction Company, the design party is GSA, and the construction height is 8 floors. Our service scope: Project International Procurement Services



埃及新首都CBD项目P5标段C02、C03 TOWER项目 Egypt's New Capital CBD Project P5 Section C02, C03 TOWER Project

该项目位于埃及开罗以东约 50km 新行政首都 CBD 区域内 C02、C03 TOWER，为精装修办公楼，建筑面积为 152,300 m²，建筑高度(地上)80m，地下 2 层，地上 16 层，结构形式为框架剪力墙结构。建设单位为中国建筑第八工程局有限公司总承包公司。我们的服务范围：精装材料及分包的国际采购服务。

The project is located in the C02 and C03 TOWER area of the new administrative capital CBD, approximately 50km east of Cairo, Egypt. It is a finely decorated office building with a BUA of 152,300 m², a height of 80m above ground, 2 underground floors, and 16 floors above ground. The structural form is a frame shear wall structure. The main contractor is China Construction Eighth Engineering Bureau Co., Ltd. Our service scope: International procurement services for fine decoration materials and subcontracting

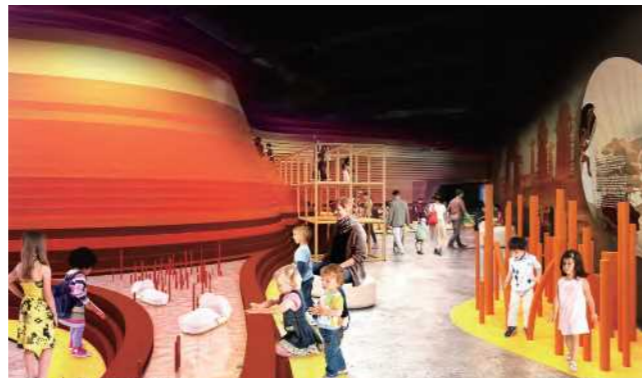


美国MO博物馆

American MO Museum

由著名的美国博物馆设计公司YAZDANI STUDIO设计,是一个充满现在元素的互动式的博物馆,博物馆集中了目前世界上最先进的材料和工艺,并将艺术性和故事完美融合,形成一个精神理念的完美传达。博物馆中设置不同的功能区域,使得参观更具体验性和舒适性。

The MO Museum located in New York, designed by the famous American museum design company YAZDANI STUDIO, is an interactive museum full of present elements. The museum focuses on the world's most advanced materials and craftsmanship, and integrates art and story perfectly to form a perfect transmission of spiritual ideas. Different functional areas are set in the museum to make the visit more experiential and comfortable.



团队成员以往工程经验 Team Members Project Experience



◀ 迪拜棕榈岛项目
Palm Jumeirah Project, Dubai



◀ 迪拜范思哲公寓
Versace Apartment, Dubai



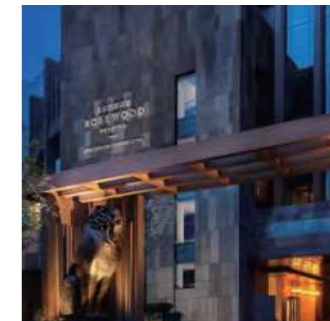
▶ 迪拜芬迪公寓
Fendi Casa Apartment, Dubai



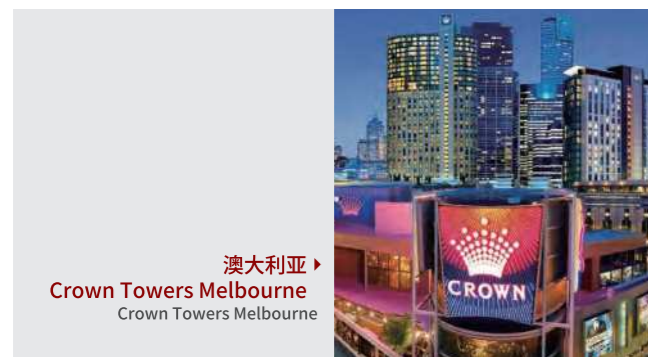
▶ 迪拜罗伯特·卡沃利公寓
Just Cavalli Apartment, Dubai



▶ 迪拜派拉蒙酒店
Paramount Hotel, Dubai



▶ 北京瑰丽酒店
Beijing Rosewood Hotel



CLIENT OF COMPANY

公司客户

BVLGARI	MARRIOTT BONVOY	北京瑰丽酒店 ROSEWOOD BEIJING	HYATT 凯悦酒店集团
IHG 洲际酒店集团	SHANGRI-LA HOTELS and RESORTS	INTERCONTINENTAL	DAMAC LIVE THE LUXURY
TRUMP THE TRUMP ORGANIZATION	AKQYA	GRAND HYATT	DAMAC TOWERS by Damac Hotels & Resorts
DURAI	THE PUXUAN HOTEL AND SPA	CONRAD HOTELS & RESORTS	Radisson SLAVJANSKAYA HOTEL
NUO 诺金	UNIVERSAL BEIJING RESORT	Justcavalli	Tiger Woods Design